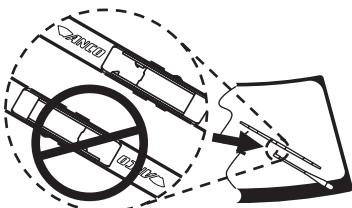


ANCO

KWIK CONNECT SYSTEM

G85358H

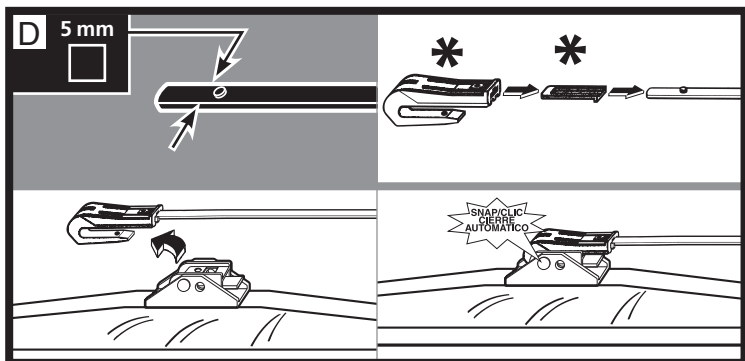
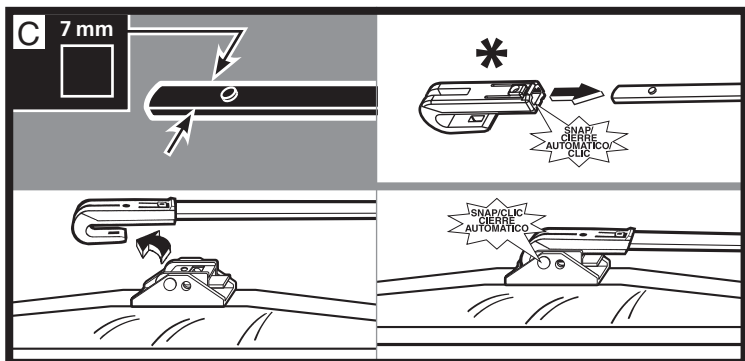
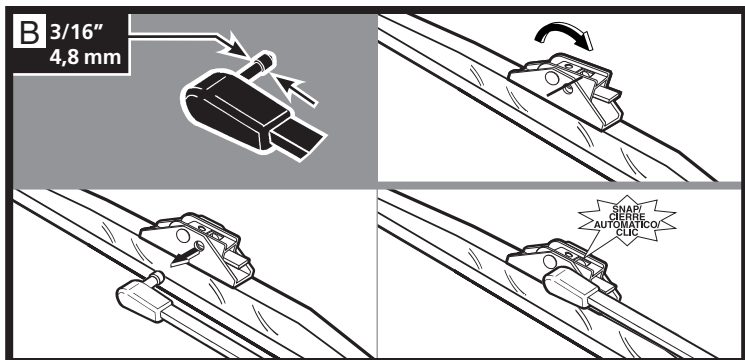
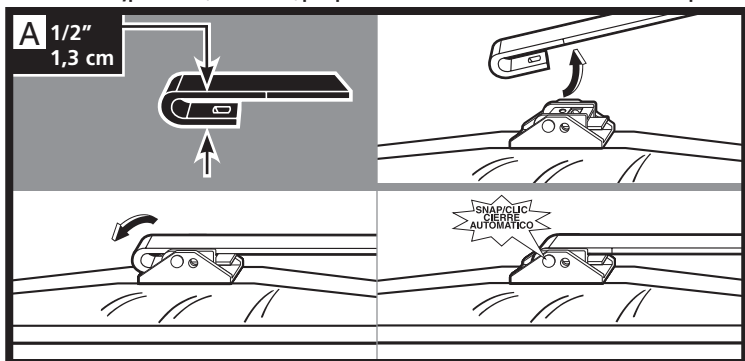


INSTALLATION/INSTALACIÓN/POSE

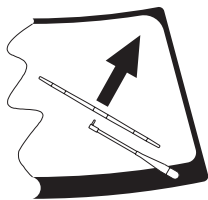
Identify arm type (A, B, C, or D) and follow easy steps to install new blade.

Identifique el tipo de brazo (A, B, C, o D) y siga los pasos fáciles para instalar la hoja nueva.

Identifier le type de bras (A, B, C, ou D) puis poser la lame neuve en suivant les instructions simples.



***** New adapter included in pack.
Se incluye un adaptador nuevo en el paquete.
Nouvel adaptateur dans l'emballage.



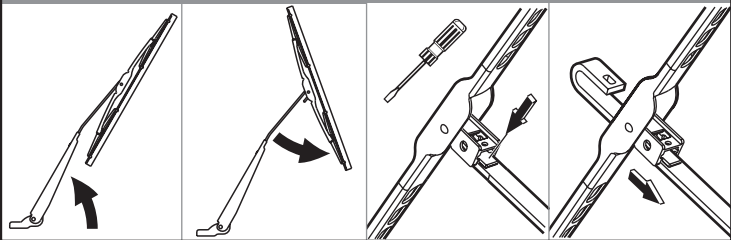
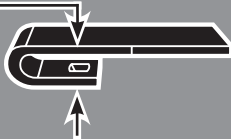
REMOVAL/EXTRACCIÓN/DÉPOSE

Identify arm type (A, B, or C) and follow easy steps to remove wiper blade.

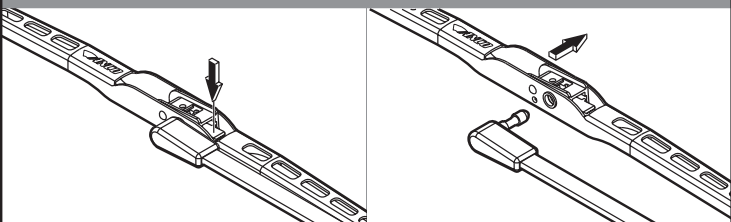
Identifique el tipo de brazo (A, B, o C) y siga los pasos fáciles para extraer la hoja del limpiaparabrisas.

Identifier le type de bras (A, B, ou C) puis enlever la lame d'essuie-glace en suivant les instructions simples.

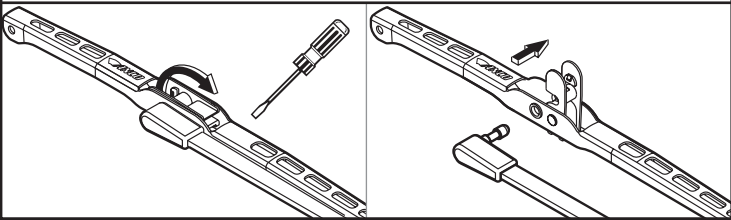
A 1/2"
1,3 cm



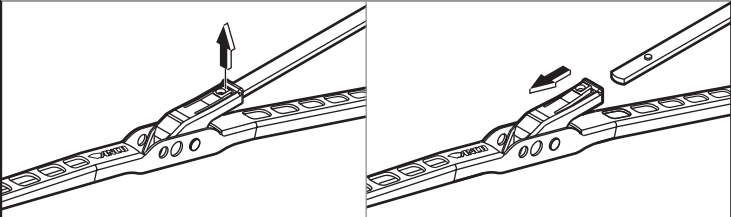
B 3/16"
4,8 mm



ORIOIOU



C



ORIOIOU

